

Matrix for England Levels of mandatory training

	Foundation	Intermediate or combined.	Advanced	Recommended Bespoke Modules
Synod Safeguarding Officers	✓	✓	✓	All
Line Managers of Synod Safeguarding Officers	✓			Line Manager training
Church Safeguarding Coordinators	✓	✓	✓	Spiritual Abuse Domestic Abuse Online Safety Safeguarding Children and Young People Safeguarding Adults Verifiers and Safer Recruitment Church safeguarding Coordinators E-learning this can be found here
Deputy Safeguarding Coordinators	✓	✓		Spiritual Abuse Domestic Abuse Online Safety

				Safeguarding Children and Young People Safeguarding Adults
Members of the General Assembly Safeguarding Committee	✓			
Synod Safeguarding Committees and Reference Groups	✓			
Active Ministers and CRCWs including retired ministers who meet the requirements of active ministry)	✓	✓	✓	Spiritual Abuse Domestic Abuse Online Safety Safeguarding Children and Young People Safeguarding Adults Supporting Survivors
Synod Moderators	✓	✓	✓	All
Synod Clerks	✓			Safer Recruitment

				As directed by line management – please consider which bespoke modules are most relevant in your own Synod.
Synod Staff	✓			
Church House staff	✓	As directed by line management	As directed by line management	
Children's and Youth Workers including lead volunteers	✓	✓		Safeguarding Children and Young People Online Safety
Regular children's and youth work helpers (working under supervision)	✓	✓		Safeguarding Children and Young People Online Safety
One-off or occasional children's and youth work helpers (working under supervision)	✓			
Managers of children's, youth and Adult' workers	✓	✓		Safeguarding Children and Young People Online Safety
Adult Workers including regular	✓	✓		Safeguarding Adults Modern Slavery Drug and Alcohol Abuse and the links to Safeguarding

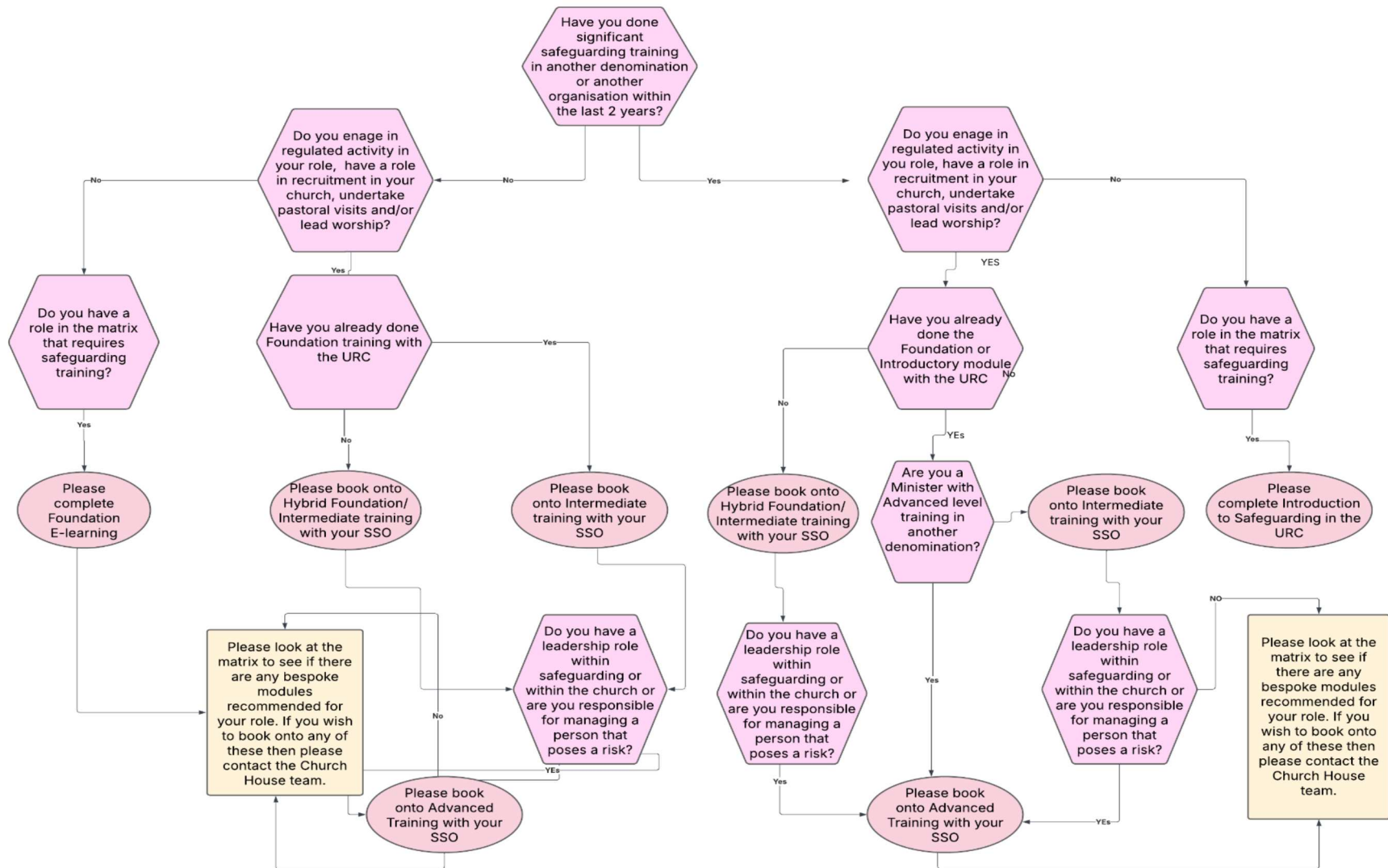
volunteer helpers and Leaders.				Refugees and Asylum Seekers
Volunteers for one-off events (Adult groups)	✓			
Pastoral Visitors	✓	✓	Where visits include offenders managed by the church	Domestic Abuse Safeguarding Adults Modern Slavery Supporting Survivors
Worship Leaders and Assembly Accredited Lay Preachers	✓	✓		Domestic Abuse Safeguarding Adults Supporting Survivors
URC Trustees and Synod Trustees	✓			
Elders as Trustees	✓	✓	Where there is no Minister	Elders as Trustees Domestic Abuse

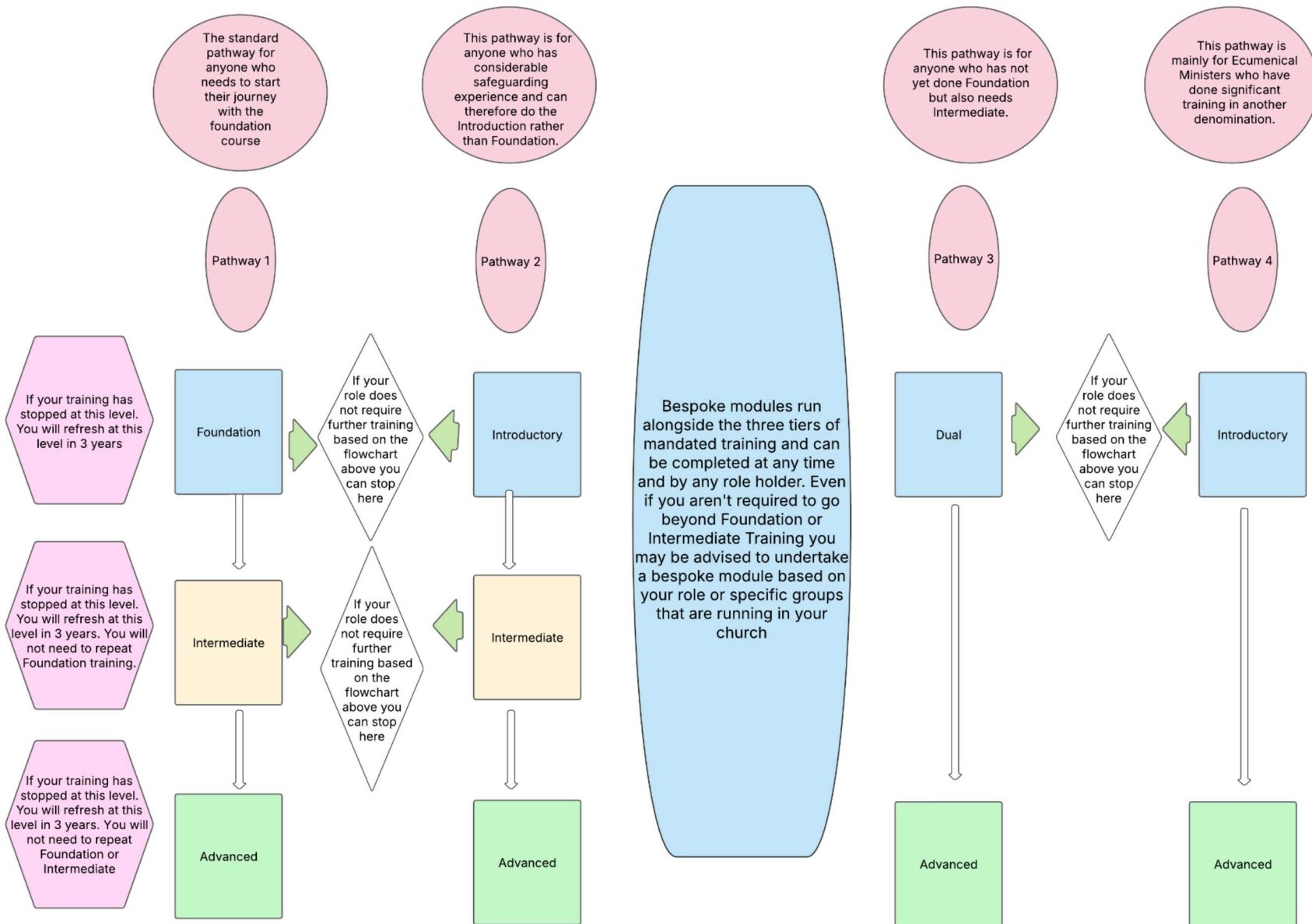
			and if there is a managed offender in the church at least one Elder must undertake this level.	Supporting Survivors Safeguarding Adults
Church Secretary	✓	✓		Verifier and Safer Recruitment
Chaplains and Ministers on the Roll in other roles	✓	✓		
Assembly Accredited Lay Pioneers	✓	✓		Domestic Abuse Supporting Survivors

If a role is not mentioned, then the role holder must speak to their SSO for clarification on the level of training needed. Further clarification can be found in the flow chart. Please answer the questions regarding your responsibilities to determine the level needed.

Please note that there may be other bespoke modules relevant to your role so please consider what is appropriate in your own church. This will vary from church dependent on what groups you run or communities you may be involved with.

Flowchart





Bespoke Modules

These are available to ANY member of the church or role holder. Bespoke modules can be completed at any stage of a learner's journey once they have completed Foundation training and can be undertaken prior to other levels (i.e. Intermediate and Advanced) within the mandated framework.

The Modules are currently:

- Domestic Abuse
- Supporting Survivors
- Spiritual Abuse
- Drug and Alcohol Abuse and the links to Safeguarding
- Refugees and Asylum Seekers
- Safer Recruitment
- DDC Verifier training
- Modern Slavery
- Online Safety
- Protecting Children and Young People
- Safeguarding Adults
- Elders as Trustees

Dates for this training are circulated by the Central Team and each training will be available on Zoom. Bookings for this training can be made via the Church House Safeguarding Administrator. New modules will still be developed in line with feedback from the annual returns and in response to legislation or topical issues. All bespoke training will be reviewed regularly to reflect the current climate surround each topic.