

Moderator's Manse

1 Golygfa'r Eglwys
Pontypridd
CF37 1JL

The Moderator's Manse is a modern five-bedroomed detached house in Pontypridd, Rhondda Cynon Taff. The street name means 'Church View', as the development overlooks a small former chapel.

The garden to the rear has a small lawn surrounded by gravel and decking with a bed containing established trees and acers. There is an 8 x 10 ft shed and the area is enclosed with a gate. There is a small lawn and gravelled area to the front.

Pontypridd is about 12 miles northwest of Cardiff. The house is just over a mile from the A470, the main north-south road in Wales, and less than a mile from Pontypridd Railway Station. There are frequent train services to Cardiff, taking about 30 minutes.

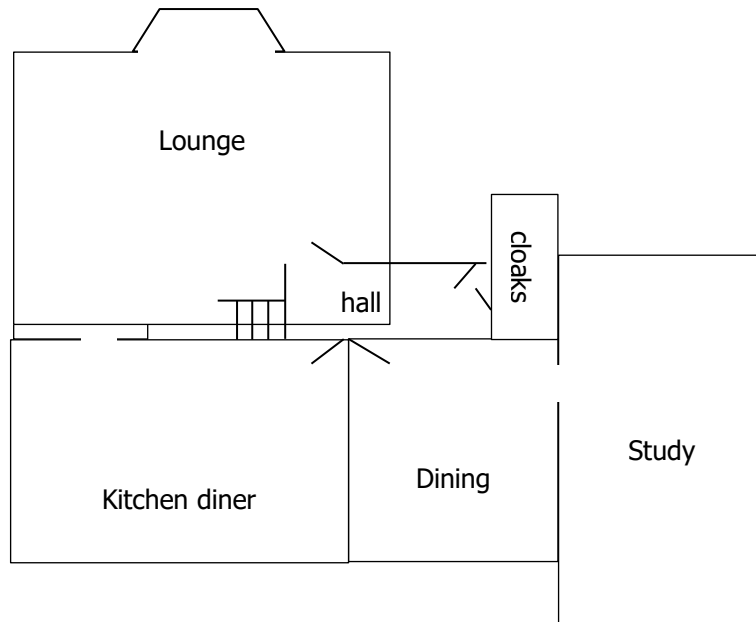
Pontypridd is situated at the junction of the Rhondda and Taff/Cynon Valleys, where the River Rhondda flows into the Taff. The name derives from 'Pont-y-ty-pridd', meaning the 'bridge by the earthen house'. The Welsh national anthem, 'Hen Wlad Fy Nhadau', was composed in Pontypridd by Evan James and James James in 1856.

The manse is provided under the Plan for Partnership. Should the Moderator prefer to live in their own house, a housing allowance will be provided.

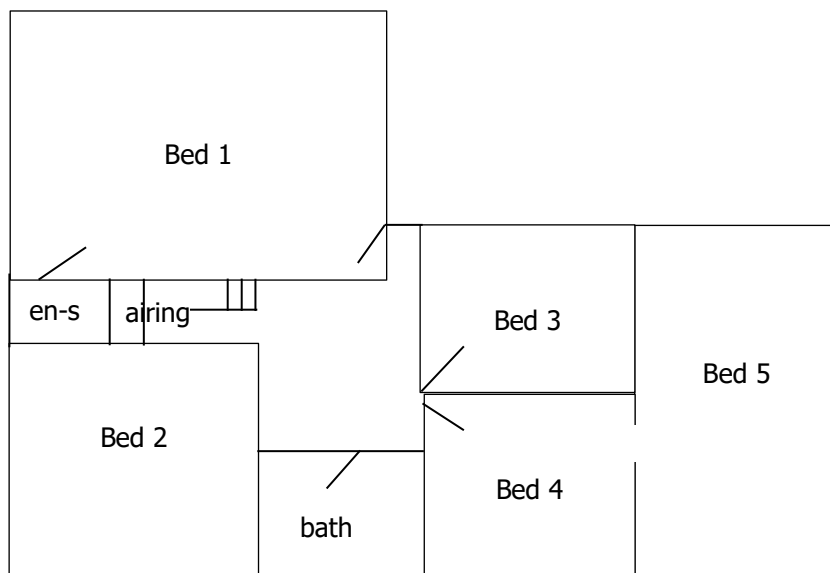


Floor plan (not to scale)

Ground floor



First floor



Plot plan

